



MSM DES

Sirolimus Eluting Stent System

Stent Details

TYPE OF DESIGN	Slotted tube, open-cell design with 3 interlinks per segment
DESIGN DETAILS	9 crowns per ring segment
MATERIAL	Cobalt chromium L 605 alloy
EXPANSION RANGE	2.25 mm - 4.00 mm
STRUT THICKNESS	0.0026" (65 µm)
STRUT WIDTH (MAIN SEGMENT)	0.0028" (72 µm)
STRUT WIDTH (INTERLINK)	0.0023" (58 µm)
SHORTENING AFTER EXPANSION	< 2%
MECHANICAL RECOIL	< 5%
METAL COVERAGE	< 15%
SIROLIMUS MATRIX THICKNESS	3-5 µm
GUIDING CATHETER COMPATIBILITY	5 F

Stent Delivery System Details

COATING	Hydrophilic shaft coating
BALLOON FOLDING	2.25 – 2.50 mm 2-fold balloon
MARKER BANDS	2.75 – 4.00 mm 4-fold balloon
TIP PROFILE	Embedded Platinum/Iridium
MAX. RECOMMENDED GUIDE WIRE	0.017" (0.43 mm) 0.014" (0.36 mm)

Order Information

Stent Length	8 mm	10 mm	13 mm	16 mm	18 mm	23 mm	28 mm	33 mm	38 mm	43 mm	48 mm
2.25 mm	DES22508	DES22510	DES22513	DES22516	DES22518	DES22523	DES22528	-	-	-	-
2.50 mm	DES25008	DES25010	DES25013	DES25016	DES25018	DES25023	DES25028	DES25033	DES25038	DES25043**	-
2.75 mm	DES27508	DES27510	DES27513	DES27516	DES27518	DES27523	DES27528	DES27533	DES27538	DES27543**	DES27548**
3.00 mm	DES30008	DES30010	DES30013	DES30016	DES30018	DES30023	DES30028	DES30033	DES30038	DES30043**	DES30048**
3.25 mm	DES32508	DES32510	DES32513	DES32516	DES32518	DES32523	DES32528	DES32533	DES32538	DES32543**	DES32548**
3.50 mm	DES35008	DES35010	DES35013	DES35016	DES35018	DES35023	DES35028	DES35033	DES35038	DES35043**	DES35048**
4.00 mm	DES40008	DES40010	DES40013	DES40016	DES40018	DES40023	DES40028	DES40033	DES40038	DES40043**	DES40048**

**min. order quantity
20 pcs per size

36 month shelf life

MSM AG
Meisenweg 5
D-75443 Oetisheim
Germany

Phone +49 7041 4835
Fax +49 7041 7665

info@m-s-m-ag.com ☎ 1434
www.msm-ag.info

Grupo Medical Lomaq
Tel 52 81 1955 3512
farmacia@grupolomaq.com
www.grupolomaq.com

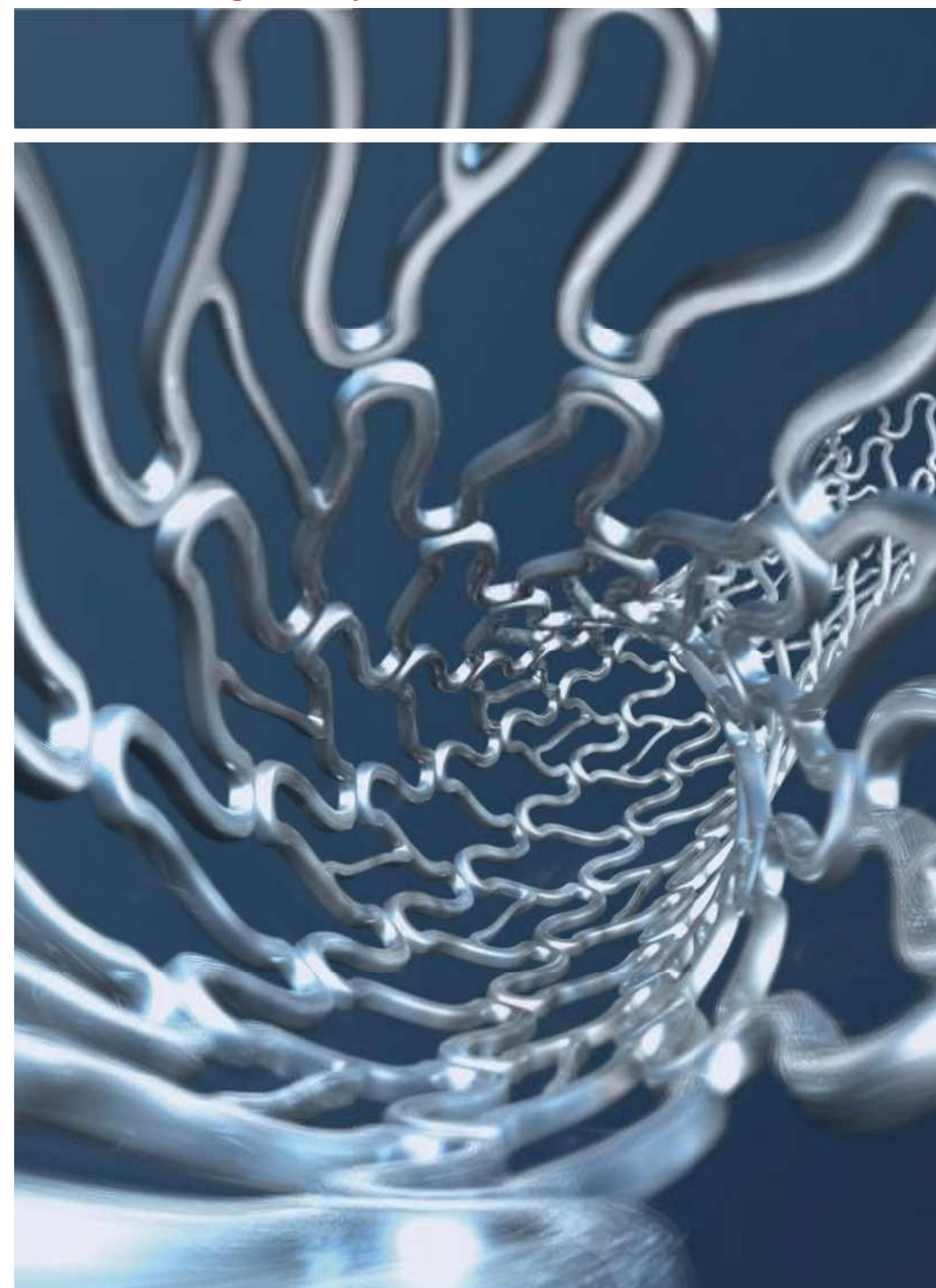
Quality Made in Germany

REV. 02/2019



MSM DES

Sirolimus Eluting Stent System



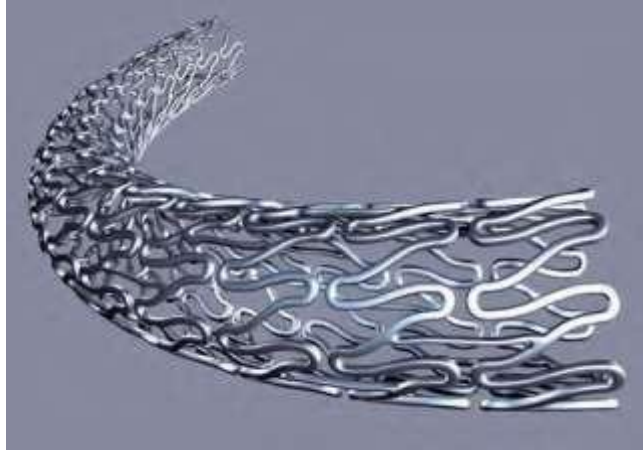
Cobalt Chromium Platform
Biodegradable Matrix

Cardiology
Solutions

Sirolimus Eluting
Stent System

Quality Made in Germany

Stent Design

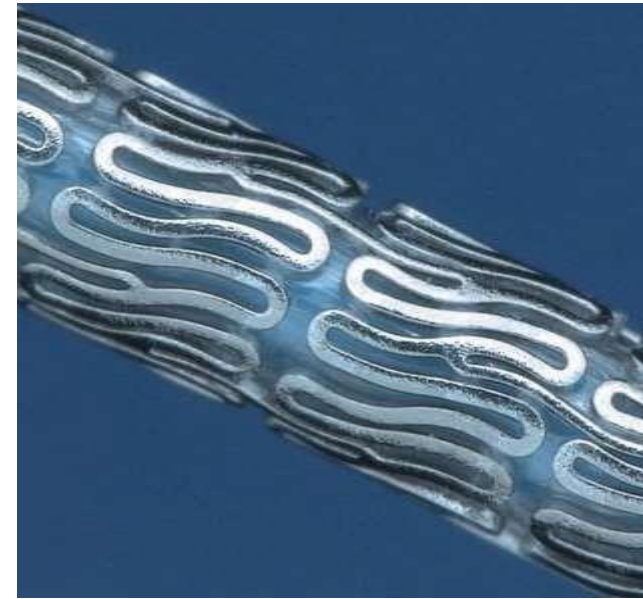


- Trusted Cobalt Chromium
- 3-interlink design for flexibility
- Uniform scaffolding and perfect support on a bend

Stent Delivery Catheter



- Excellent deliverability and confident deployment

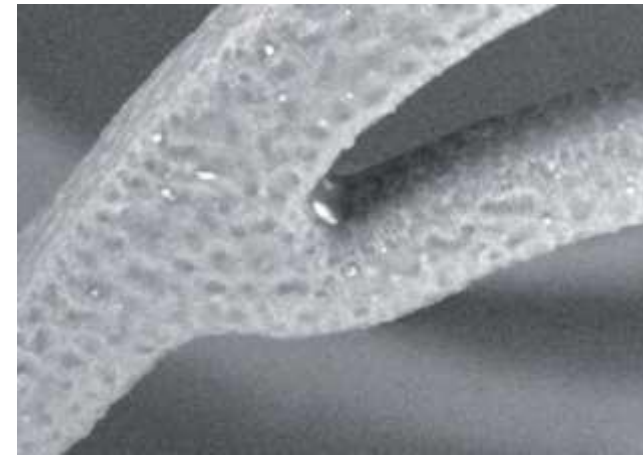


Magnification V = 100x

- Provides consistent, controlled 100 % release of Sirolimus
- Maintains integrity during delivery, implantation and expansion
- Assures biocompatibility
- Drug dose: 1.4 µg/mm²



Magnification V = 200x



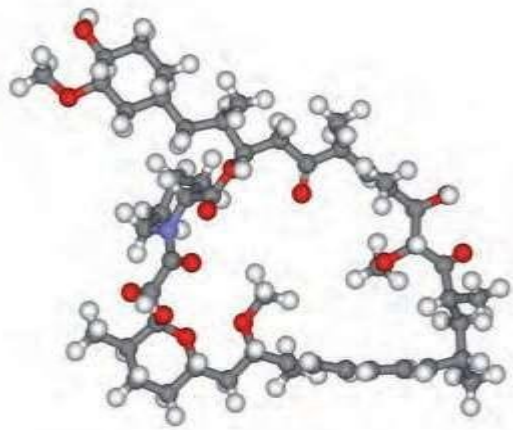
Magnification V = 600x



Magnification V = 200x

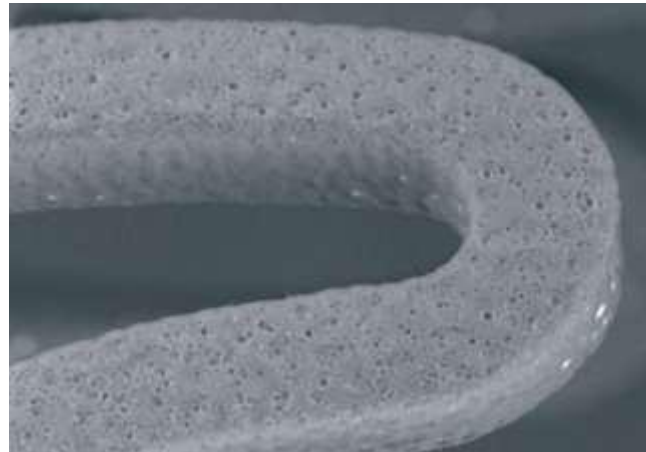
...SAFETY ...EFFICACY ...DELIVERABILITY

Drug: Sirolimus



- Proven anti-proliferative agent
- Cytostatic mechanism of action that leaves vessels healthy and viable without destroying them

Polymer: PLGA 85/15

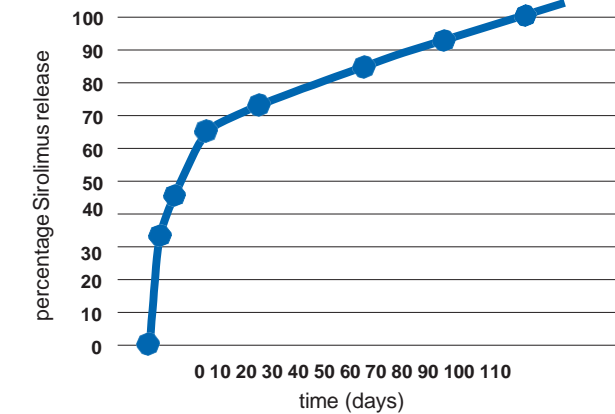


- Biocompatible PLGA polymer for safety and efficacy with excellent structural integrity and 100% drug release

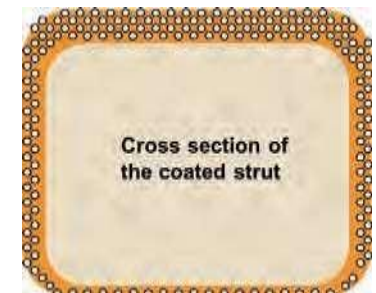
A highly deliverable Thin-Strut Drug Eluting Stent



In-Vivo Release Kinetic



Matrix Thickness
Abluminal Side: ~ 5 µm



Matrix Thickness
Luminal Side: ~ 2.5 µm